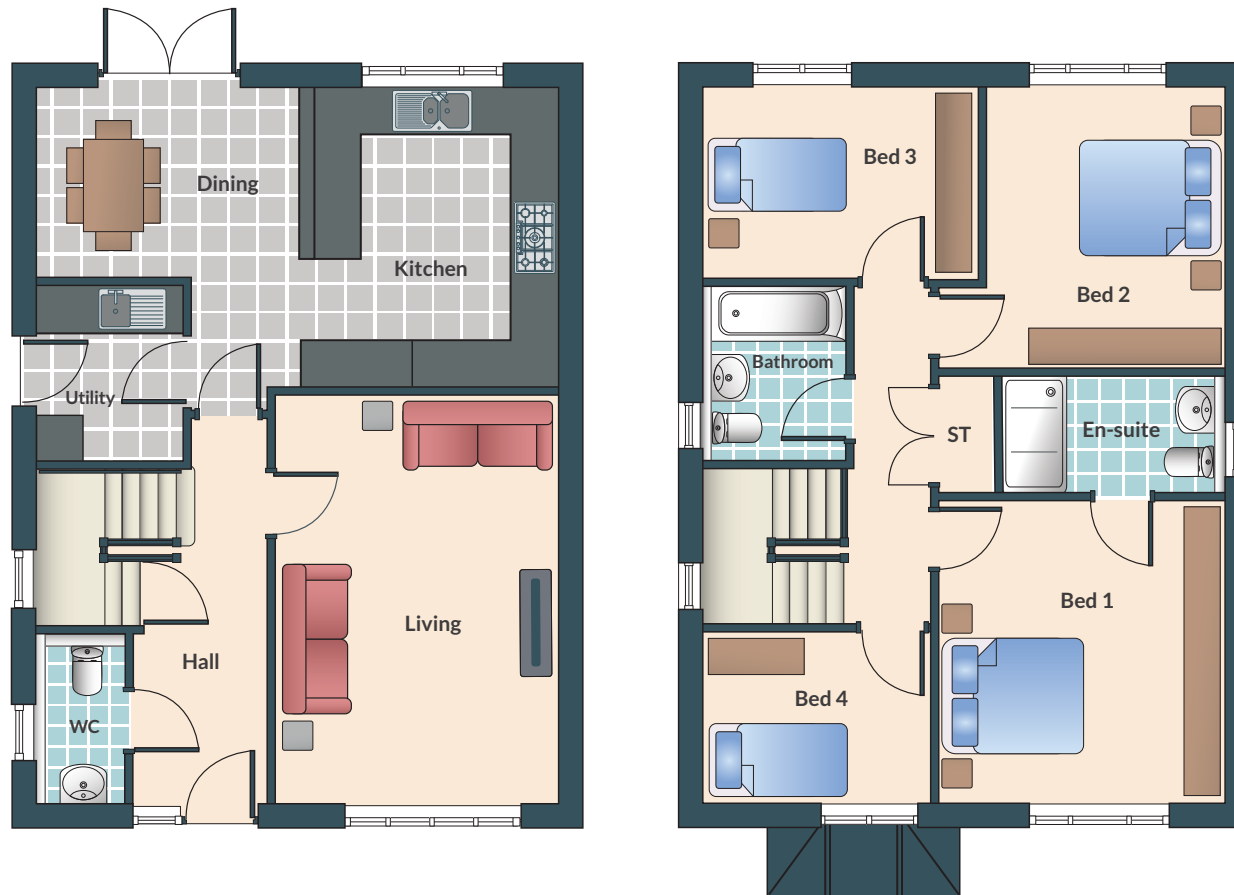




This beautiful detached four bedroom home offers spacious accommodation throughout. The Rosedene is finished to a bespoke contemporary standard, with a large kitchen/diner fitted with designer units and breakfast bar, set beneath stunning work surfaces.

Fitted with a range of appliances which come as standard and a utility which has space for a washer and dryer. The Rosedene also boasts a large en-suite shower room plus family bathroom with shower over bath. Both are fitted with a range of stylish tiles to suit all tastes. Outside you will be greeted with a landscaped front garden and fully turfed rear which includes a patio area for seating. This really is a beautiful 4 bedroom property fit for any family.



Living	5150mm x 3520mm	16'10" x 11'6"	Ensuite	2750 x 1400	9' x 4'7"
Kitchen / Dining	6600mm x 3730mm	21'7" x 12'2"	Bedroom 2	3450 x 1400	11'3" x 9'6"
Utility	1800mm x 2100mm	5'10" x 6'10"	Bedroom 3	3400 x 2300	11'1" x 7'6"
WC	2100mm x 950mm	6'10" x 3'1"	Bedroom 4	2100 x 2800	6'10" x 9'2"
Bedroom 1	3800mm x 3500mm	12'5" x 11'5"	Bathroom	2100 x 1700	6'10" x 5'6"



To make an appointment with our sales representative:
 Tel: 01246 57 57 44 • Email: sales@woodallhomes.co.uk

www.woodallhomes.co.uk



Raising Standards. Protecting Homeowners